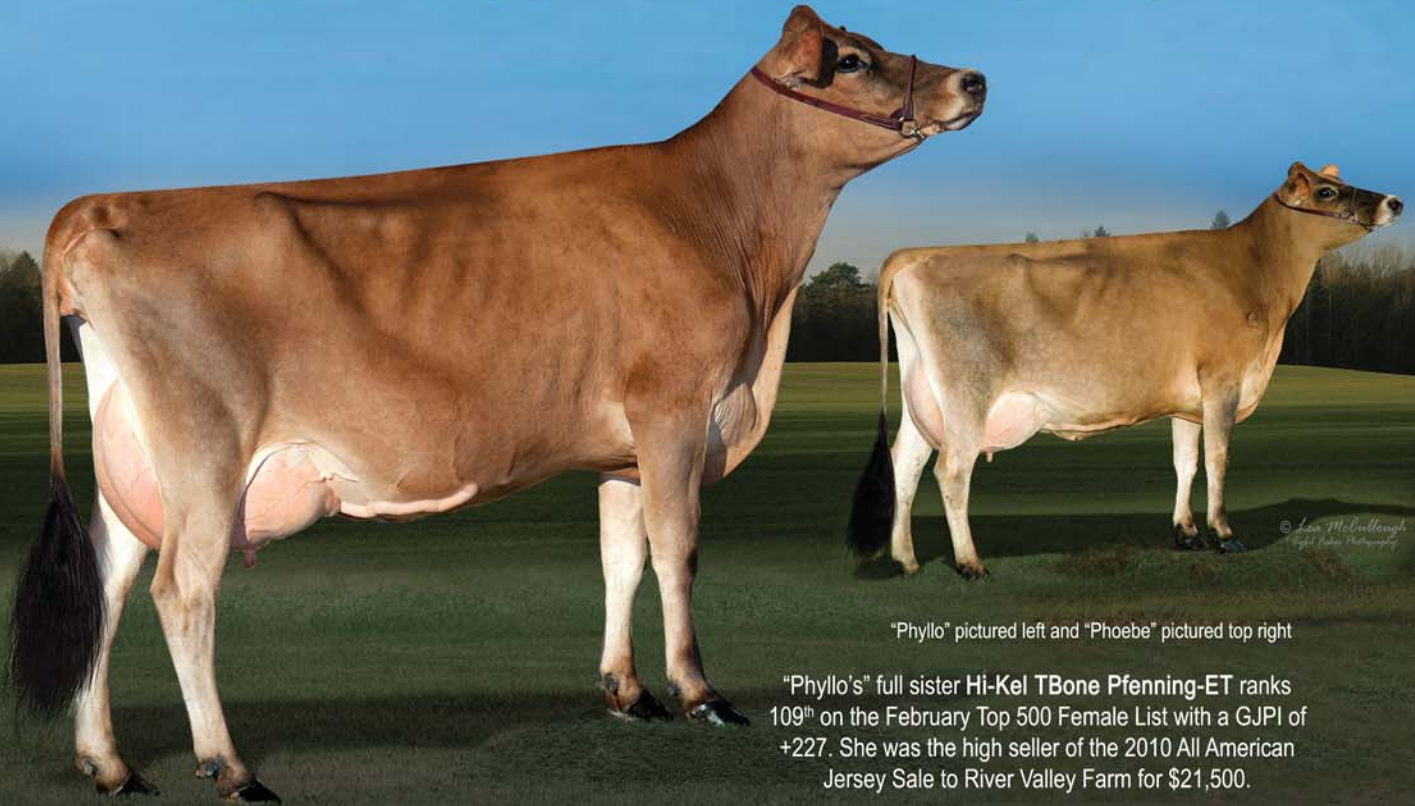


Family Matters

This high indexing-production oriented family is a hit!



"Phyllo" pictured left and "Phoebe" pictured top right

"Phyllo's" full sister **Hi-Kel TBone Pfenning-ET** ranks 109th on the February Top 500 Female List with a GJPI of +227. She was the high seller of the 2010 All American Jersey Sale to River Valley Farm for \$21,500.

HI-KEL TBONE *P*HYLLO-ET, VG-84%

1-8 251 14,230 5.0% 711 3.8% 543 RIP
25,200 — 1,246 — 965 PME

+5,100M, +205F, +216P over herdmates 123%RV

- Ranks on the Feb. Top 1.5% GJPI Cow List (GJPI +172)
- Pregnancies by Sunset Canyon Dimension-ET with contracts to Select Sires and pregnancies by Sun Valley Impuls Jupiter with contracts to Genex/CRI

Dam: **Pats Perfect Phoebe, VG-85%**

1-11 305 17,710 5.2% 925 3.8% 679 101DCR

Grandam: **Dupat Bill J832, E-90%**

3-0 305 22,380 4.7% 1,042 4.1% 910 99DCR

- Overall Winner, 2005 National Jersey Youth Production Contest
- 2nd 2006 Pot O'Gold Production Contest

The next three dams: VG-85% "Montana" with 19,800M; VG-88% "Henery-P" with 19,200M; and VG-84% "Francis" with over 20,000M

Watch for members of this family to sell on June 23 in the *Cow Power Sale* at the farm. Contact Kip and Robin or a member of the JMS staff today for details or to consign to this exciting sale!

2011 AJCA Lactation Average on 78 cows

21,617M | 1,128F | 806P

• 3rd Fat • 5th Protein • 7th Milk
among herds of similar size (40-79 cows)



DEN-KEL JERSEYS

Kip Keller and Robin Denniston-Keller

