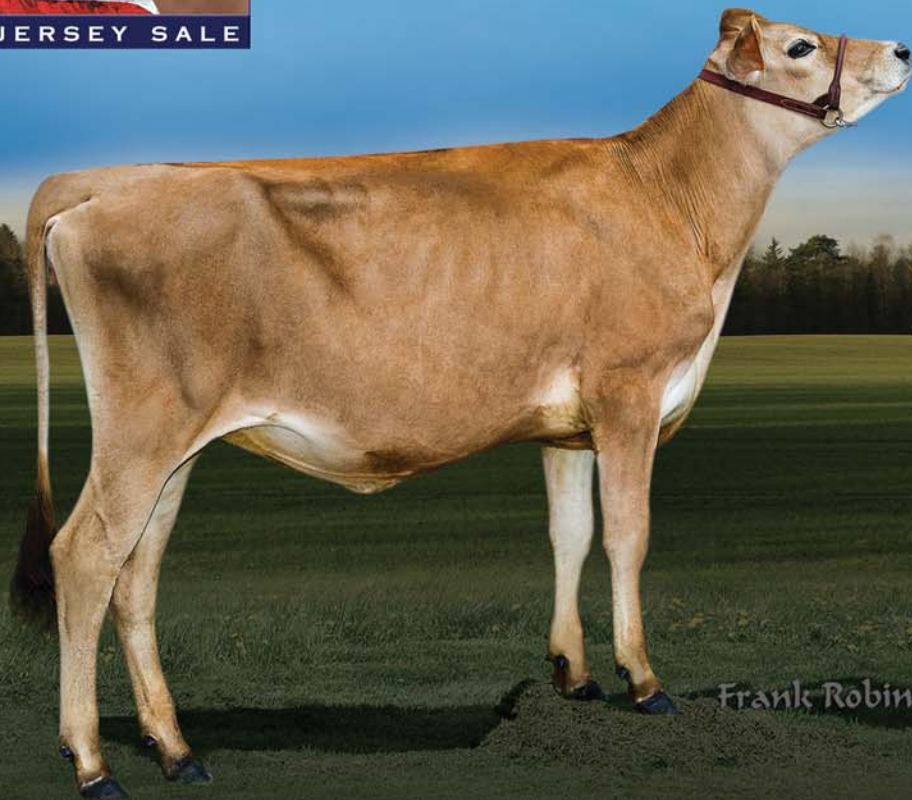




Family Matters

One of our strongest maternal lines



Maternal sisters to the grandam:



DEN-KEL JOAN-ET, E-90%
 3-0 305 21,820 4.8% 1,050 3.8% 833 100DCR
 • Ranks on the Top 1.5% GJPI Cow List at +203
 • Contracted to ABS Global



DEN-KEL JEVON JATTY-ET, VG-86%
 3-2 305 20,840 5.5% 1,139 4.2% 874 102DCR



DEN-KEL AGANTRESS-ET, VG-88%
 1-11 304 22,740 4.5% 1,032 3.5% 804 100DCR
 • Ranks on the Top 1.5% GJPI Cow List at +174



GR DEN-KEL DALE JUSTA-ET, VG-88%
 3-2 305 26,350 4.5% 1,177 3.4% 884 102DCR
 • Her son Den-Kel Hendrix Jammer-ET
 is at Select Sires, GJPI +216

Selling November 9 at The All American Sale:

DEN-KEL GALVANIZE JADED, P9

+2,297M +56F +64P +\$574CM +4.6PL Type +2.2
 GJUI +4.23 GJPI +253 CDCB: GPTA 9/14 64%R JH1C

Ranks 57th in the nation for GJPI | #1 "Galvanize" daughter

Born: January 4, 2014 Sire: Buttercrest Galvanize

*From our "Jayne" family that
 transmits generation after generation!*

The next six dams:

- | | |
|--|--|
| 1 st : Den-Kel Headline Jumpie-ET, VG-80%
Proj. to 22,980—1,027—835 ME at 1-10 | 4 th : Den-Kel Lemvig Jelly-ET, E-91%
35,300M 1,661F 1,165P at 9-6 |
| 2 nd : Den-Kel Jump-ET, VG-82%
20,450M 1,131F 785P at 1-7 | 5 th : Hollyrock Marcus Julie, E-91%
26,340M 997F 783P at 8-0 |
| 3 rd : Den-Kel Impuls Julie Too, E-91%
25,240M 1,294F 1,000P at 4-2 | 6 th : Ogston Vertols Jayne, E-90%
20,040M 866F 677P at 7-11 |

DEN-KEL JERSEYS

Kip Keller | 6476 N. Bergen Rd., Byron, NY 14422
 585.548.2299 | denkeljerseys@aol.com

